

DIGATRON ECU



QUESTIONS?

+39 02 565 69 844

info@digatronsistemas.com

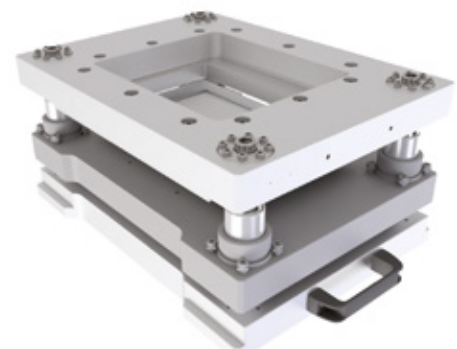
ELECTRODE CUTTING UNIT

Digatron Systems ECU, Electrode Cutting Unit, is an automatic electrode die cutting equipment designed to punch electrodes from coated aluminium and copper rolls.

A roll of coated electrode is manually loaded on the machine and the web is automatically pulled under the die cutting station.

A high-precision cutting die performs clean cut of the electrode according to the required dimension.

Simultaneously, a pick and place system places the cut electrode into a storage tray.



TECHNICAL DATA



QUESTIONS?

+39 02 565 69 844

info@digatronsistemas.com

GENERAL DATA

Power supply AC input	400V 3ph+N 50Hz (others on request)
Power supply	4 A max
Compressed air	8 NI/m at 0,6 MPa – 12”
Weight	920 Kg
Dimensions (WxDxH)	1570 x 970 x 2100 mm

ELECTRODE ROLL DIMENSIONS (mm)

External diameter	250 Max
Electrode width	300 Max
Core internal diameter	76.2 (3”)
Core width	340 Max

CUT ELECTRODE DIMENSIONS (mm)

Width	from 50 - 175
Height	from 60 to 245 (height of coated area)
Thickness	from 0.10 to 0.20 mm

TRAY ELECTRODE DIMENSIONS (mm)

External length	350
External width	210
Height	175
Weight pallet (empty)	3,8 Kg